

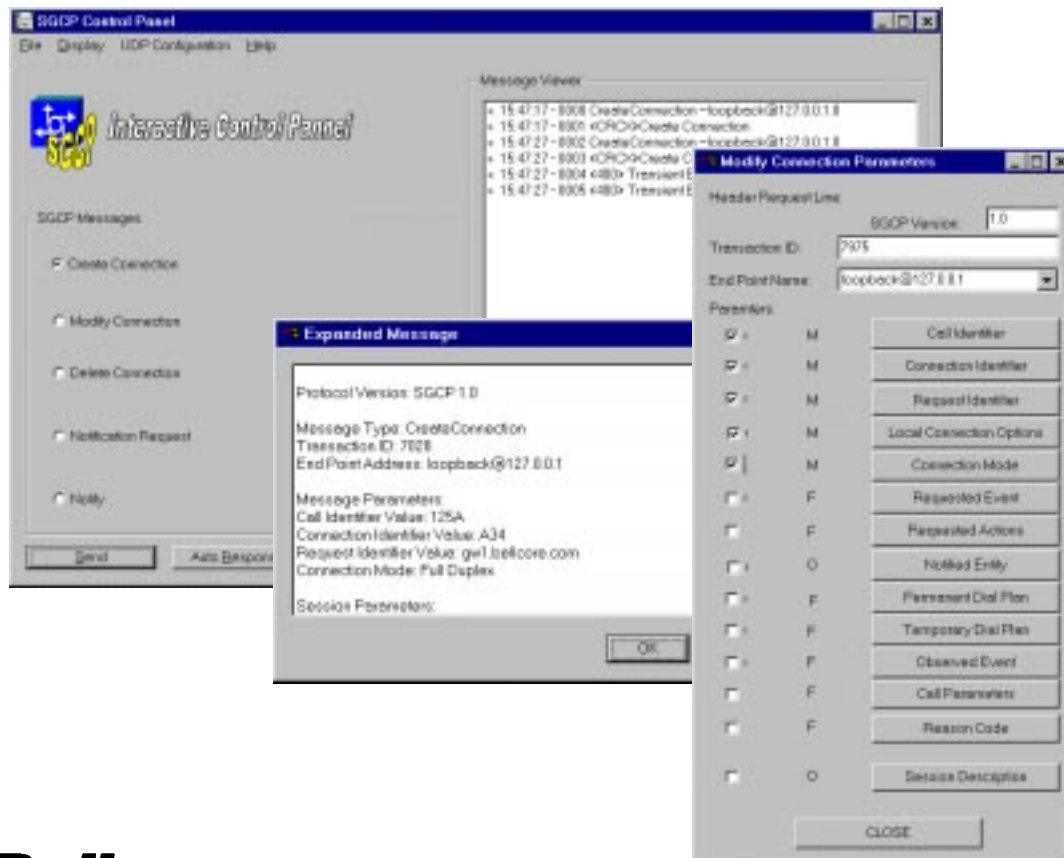


Interactive Control Panel

The Simple Gateway Control Protocol-Interactive Control Panel (S-ICOP) tool is a new member of the family of Bellcore Interactive tools created for facilitating the testing of signaling protocol interfaces. Particularly suitable for testing the SGCP interface of a VoIP Gateway and Announcement Server, it can also be used to simulate any SGCP node in its interaction with an SGCP Internet Call Routing (ICR) node. The ICR node is a new SS7 capable node that contains the intelligence for Internet call routing.

The SGCP ICOP tool is a Graphical User Interface (GUI) which allows interactive access and control of SGCP Messages. SGCP packets can be created and sent to a System Under Test (SUT) with just a few mouse clicks. All messages sent and received by the application are logged and fully decoded in plain English.

The SGCP ICOP Panel allows the tester a more efficient and versatile way to test an SGCP interface in both conformance and interoperability test scenarios where it could be used to simulate special features or capabilities.



Bellcore
Bell Communications Research
Network Services Integration

Consulting Solution

Network Services Integration Custom Test Solution

SGCP ICOP FEATURES:

- ✓ Microsoft Windows '95/ NT 3.51/4.0 compatible
- ✓ Supports all Windows compatible Ethernet interface cards
- ✓ The graphical interactive SGCP message builder allows for the creation of SGCP packets with just a few mouse clicks
- ✓ Syntactically or semantically incorrect SGCP protocol messages can be easily created for testing of abnormal conditions
- ✓ For greater flexibility the message built can be edited before being sent
- ✓ Logging of messages sent and received
- ✓ The Smart Display can conveniently be cleared to isolate a specific test sequence and updated with a simple mouse click
- ✓ The application allows the tester to insert custom text comment in the log file to document the test execution
- ✓ The logged trace can be saved for archiving purposes or for post processing analysis
- ✓ Full decoding of SGCP messages in plain English
- ✓ Captures and displays received raw data packets
- ✓ The Advanced Auto Responder allows pre-programming of the application to automatically respond to a given received message with a pre-selected response
- ✓ Modular and extensible: it can be customized to support Test Automation capabilities e.g. generate, store, and execute test sequences

Bellcore can help:

Network Services Integration

Clinton M. Hamilton, Director

1-732-758-3055

chamilto@notes.cc.bellcore.com

Or, discover Bellcore on the Internet:

<http://www.bellcore.com>